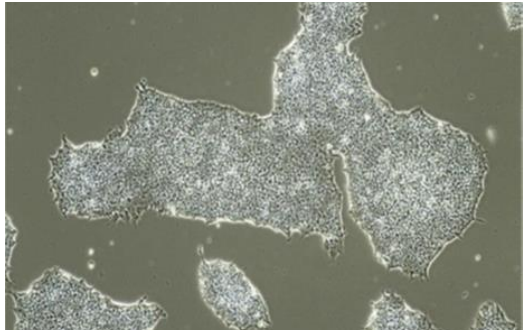
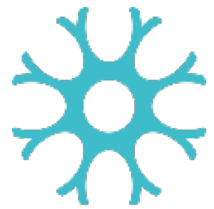
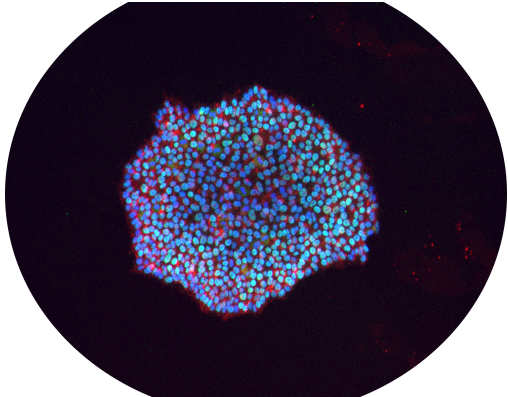


iPSC Catalog

Last modified: October 2021



C-BIG
Repository



neuro

Institut-Hôpital
neurologique de Montréal
Montreal Neurological
Institute-Hospital

Updated: Oct 20th, 2021



Shipment Notes:	Ready to ship: These cell lines will take approximately 2-4 weeks
	Available upon request: These cell lines will take approximately 6-8 weeks to be prepared
	In production: These cell lines are being made, enquire for timeline

CELL LINE NAME	CELL LINE STATUS	SEX	PATIENT AGE (years)	MATERIAL SOURCE	TYPE OF REPROGRAMMING	GENE AFFECTED	DISEASE MUTATION
HEALTHY INDIVIDUALS							
AIW-002-02	Ready to Ship	M	37	PBMC	RETROVIRUS	NA	NA
AJC001-5	Ready to Ship	M	37	FIBROBLAST	RETROVIRUS	NA	NA
AJD002-3	Ready to Ship	M	44	PBMC	RETROVIRUS	NA	NA
AJG-001-C4	Ready to Ship	M	37	PBMC	EPISOMAL	NA	NA
3448	Ready to Ship	M	48	PBMC	EPISOMAL	NA	NA
3450	Ready to Ship	M	37	PBMC	EPISOMAL	NA	NA
TD-02	Ready to Ship	F	48	PBMC	EPISOMAL	NA	NA
TD-03	Ready to Ship	M	44	PBMC	EPISOMAL	NA	NA
TD-22	Ready to Ship	M	59	PBMC	EPISOMAL	NA	NA
3630	Ready to Ship	M	64	PBMC	EPISOMAL	NA	NA
3518	Ready to Ship	F	58	PBMC	EPISOMAL	NA	NA
3620	Ready to Ship	F	67	PBMC	EPISOMAL	NA	NA
3675	Ready to Ship	M	61	PBMC	EPISOMAL	NA	NA
3750	Ready to Ship	M	68	PBMC	EPISOMAL	NA	NA
3394	Ready to Ship	M	59	PBMC	EPISOMAL	NA	NA
PARKINSON'S DISEASE							
TD-07	Ready to Ship	M	70	PBMC	EPISOMAL	SPORADIC PD	NA
TD-16	Ready to Ship	F	61	PBMC	EPISOMAL	SPORADIC PD	NA
2965	Available upon Request	M	67	PBMC	EPISOMAL	SPORADIC PD	NA
4084	Available upon Request	F	NA	PBMC	EPISOMAL	Parkin	Homozygous deletion between exon 3 and 4
3439	Available upon Request	M	54	PBMC	EPISOMAL	LRRK2	R1441H
3439 (isogenic correction)	In production	M	54	PBMC	EPISOMAL	LRRK2	R1441H (corrected)
3367	Available upon Request	M	76	PBMC	EPISOMAL	LRRK2	M1646T
3567	Available upon Request	F	64	PBMC	EPISOMAL	LRRK2	M1646T
3081	Ready to Ship	F	62	PBMC	EPISOMAL	LRRK2	G2019S
3081 (isogenic correction)	Ready to Ship	F	62	PBMC	EPISOMAL	LRRK2	G2019S (Corrected)
2942	Available upon Request	F	74	PBMC	EPISOMAL	LRRK2	G2019S
TD-06	Ready to Ship	F	65	PBMC	EPISOMAL	LRRK2	G2385R
TD-13	Ready to Ship	F	58	PBMC	EPISOMAL	LRRK2	intron variant rs41286460
TD-14	Ready to Ship	F	58	PBMC	EPISOMAL	LRRK2	N551K-R1398H-K1423K (protective haplotype)
3940	Available upon Request	M	66	PBMC	EPISOMAL	LRRK2	N551K-R1398H-K1423K (protective haplotype)
3709	Available upon Request	F	90	PBMC	EPISOMAL	LRRK2	N551K-R1398H-K1423K (protective haplotype)
3446	Available upon Request	M	64	PBMC	EPISOMAL	LRRK2	N551K-R1398H-K1423K (protective haplotype)
3026	Ready to Ship	F	65	PBMC	EPISOMAL	GBA1	N370S
3026 (isogenic correction)	Ready to Ship	F	65	PBMC	EPISOMAL	GBA1	N370S (corrected)
2890	Ready to Ship	F	62	PBMC	EPISOMAL	GBA1	W378G
2890 (isogenic correction)	Ready to Ship	F	62	PBMC	EPISOMAL	GBA1	W378G (corrected)
TD-09	Ready to Ship	F	46	PBMC	EPISOMAL	GBA1	L324I
3595	Available upon Request	M	59	PBMC	EPISOMAL	GBA	E326K
3595 (isogenic correction)	In production	M	59	PBMC	EPISOMAL	GBA	E326K (corrected)
3575	Available upon Request	M	58	PBMC	EPISOMAL	GBA	L444P
3575 (isogenic correction)	In production	M	58	PBMC	EPISOMAL	GBA	L444P (corrected)
3123	Ready to Ship	F	64	PBMC	EPISOMAL	TMEM175	Q65P heterozygous
3383	Available upon Request	F	60	PBMC	EPISOMAL	TMEM175	homozygous M393T
3383 (isogenic correction)	In production	F	60	PBMC	EPISOMAL	TMEM175	homozygous M393T (corrected)
TD-28	Ready to Ship	F	60	PBMC	EPISOMAL	TMEM175	homozygous M393T

TD-28 (isogenic correction)	In production	F	60	PBMC	EPISOMAL	TMEM175	homozygous M393T (corrected)
ALS							
TD-15	Ready to Ship	F	46	PBMC	EPISOMAL	SOD1	I114T
TD-15 (isogenic correction)	Ready to Ship	F	46	PBMC	EPISOMAL	SOD1	I114T (Corrected)
TD-19	Ready to Ship	F	42	PBMC	EPISOMAL	SOD1	I114T
TD-25	Ready to Ship	M	62	PBMC	EPISOMAL	SOD1	I114T
3492	Ready to Ship	F	50	PBMC	EPISOMAL	SOD1	I114T
3419	Available upon Request	F	22	PBMC	EPISOMAL	SOD1	A4E
3414	Available upon Request	M	66	PBMC	EPISOMAL	C9ORF72	Expansion mutation
3581	Ready to Ship	F	80	PBMC	EPISOMAL	VAPB	A2V
TD-08	Ready to Ship	F	81	PBMC	EPISOMAL	sALS	NA
TD-17	Ready to Ship	F	65	PBMC	EPISOMAL	SALS+FTD	NA
TD-20	Ready to Ship	M	53	PBMC	EPISOMAL	sALS	NA
TD-21	Ready to Ship	M	49	PBMC	EPISOMAL	sALS, progressed from PLS	NA
TD-26	Ready to Ship	F	77	PBMC	EPISOMAL	sALS	NA
3600	Ready to Ship	M	88	PBMC	EPISOMAL	sALS	NA

Shipment Notes:	<p>Ready to ship: These cell lines will take approximately 2-4 weeks</p> <p>Available upon request: These cell lines will take approximately 6-8 weeks to be prepared</p> <p>In production: These cell lines are being made, enquire for timeline</p>
------------------------	--

CELL LINE NAME	CELL LINE STATUS	GENE of INTEREST	GENETIC MODIFICATION	GENE ID	PARENT CELL LINE
CRISPR KNOCKOUTS					
ASAH1-KO/AIW002-02	Ready to Ship	ASAH-1	CRISPR KO	ENSG00000104763	AIW-002-02
SMPD1-KO/AIW002-02	Ready to Ship	SMPD-1	CRISPR KO	ENSG00000166311	AIW-002-02
GALC-KO/AIW002-02	Ready to Ship	GALC	CRISPR KO	ENSG00000054983	AIW-002-02
SNCA-KO/AIW002-02	Ready to Ship	SNCA (alpha-synuclein)	CRISPR KO	ENSG00000145335	AIW-002-02
Parkin-KO/AIW002-02	Ready to Ship	Parkin	CRISPR KO	ENSG00000185345	AIW-002-02
PINK1/AIW002-02	Ready to Ship	PINK1	CRISPR KO	ENSG00000158828	AIW-002-02
Parkin_PINK1-KO/AIW002-02	Ready to Ship	Parkin+PINK1	CRISPR KO	See gene ID above	AIW-002-02
LRRK2-KO/AIW002-02	Ready to Ship	LRRK2	CRISPR KO	ENSG00000188906	AIW-002-02
FUS-KO/AIW002-02	Ready to Ship	FUS	CRISPR KO	ENSG00000089280	AIW-002-02
OPTN-KO/AIW002-02	Ready to Ship	OPTN	CRISPR KO	ENSG00000123240	AIW-002-02
C9ORF72-KO/AIW002-02	Ready to Ship	C9ORF72	CRISPR KO	ENSG00000147894	AIW-002-02
GBA-KO/AIW002-02	Ready to Ship	GBA	CRISPR KO	ENSG00000177628	AIW-002-02
MAPT-KO/AIW002-02	Ready to Ship	MAPT	CRISPR KO	ENSG00000276155	AIW-002-02
USP19-KO/AIW002-02	Ready to Ship	USP19	CRISPR KO	ENSG00000172046	AIW-002-02
Ataxin-3-KO/AIW002-02	Ready to Ship	Ataxin-3	CRISPR KO	ENSG00000066427	AIW-002-02
FMR1-KO/AIW002-02	Available upon Request	FMR1	CRISPR KO	ENSG00000102081	AIW-002-02
CRISPR KNOCKINS					
SNCA A30P/AIW002	Ready to Ship	SNCA	A30P	ENSG00000145335	AIW-002-02
SNCA-A53T/AIW002-02	Ready to Ship	SNCA	A53T	ENSG00000145335	AIW-002-02
SNCA-E46K/AIW002-02	Available upon Request	SNCA	E46K	ENSG00000145335	AIW-002-02
SOD1-G93A/AIW002-02	Ready to Ship	SOD1	G93A	ENSG00000142168	AIW-002-02
MAPT-P301L/AIW002-02	Ready to Ship	MAPT	P301L	ENSG00000186868	AIW-002-02
Parkin-W403A/AIW002-02	Available upon Request	Parkin	W403A	ENSG00000185345	AIW-002-02
Parkin-A401D/AIW002-02	Available upon Request	Parkin	A401D	ENSG00000185345	AIW-002-02
PRKN-Y143D/AIW002-02	Available upon Request	Parkin	Y143D	ENSG00000185345	AIW-002-02
PRKN-V393D/AIW002-02	Available upon Request	Parkin	V393D	ENSG00000185345	AIW-002-02
PINK1-3flag/AIW002-02	Available upon Request	PINK1	C-terminal FLAG tag	ENSG00000158828	AIW-002-02
FUS-H517Q/AIW002-02	Available upon Request	FUS	H517Q	ENSG00000089280	AIW-002-02
TARDBP-A382T/AIW002-02	Available upon Request	TARDBP	A382T	ENSG00000120948	AIW-002-02
TARDBP-G348C/AIW002-02	Available upon Request	TARDBP	G348C	ENSG00000120948	AIW-002-02



Institut-Hôpital
neurologique de Montréal
Montreal Neurological
Institute-Hospital



C-BIG
Repository



Email C-BIG at cbig.mni@mcgill.ca:

↳ Confirm Inventory

Complete the Application Package

↳ Include REB Approval

↳ Include the names of all

Execution of Open Transfer Agreement

↳ As well as NDA (if necessary)

Invoicing

↳ Quote and Preparation of PO#

Shipment

↳ FedEx for Local

↳ World Courier for International