



neuro

Institut-Hôpital
neurologique de Montréal

Montreal Neurological
Institute-Hospital

The Neuro's EDDU Newsletter

May ● June ● July 2024

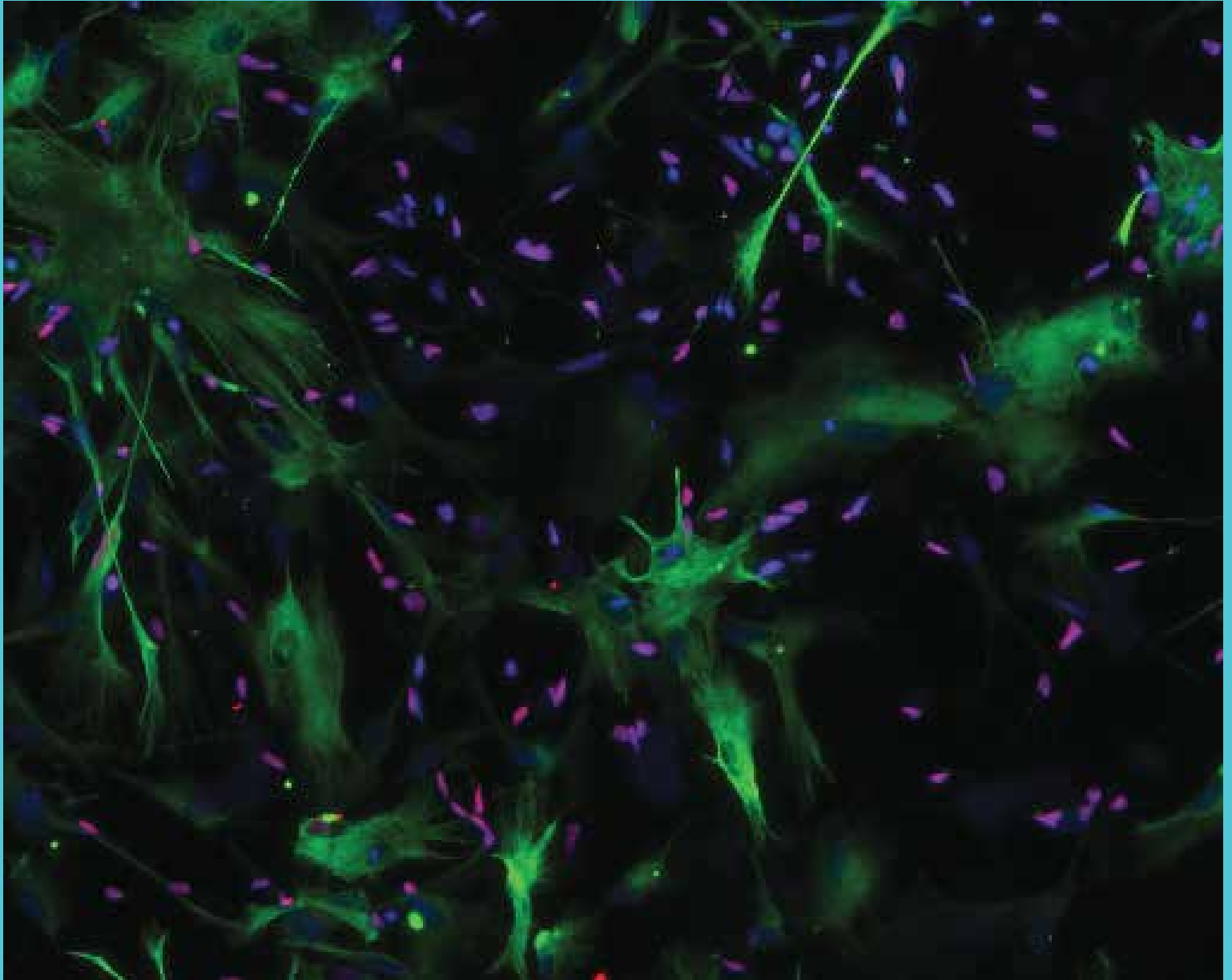


Photo: Astrocytes and OPCs

Cover of Glia, Volume 72, Issue 6, June 2024

By: Valerio Piscopo

Publications

iPSC-derived models for anorexia nervosa research

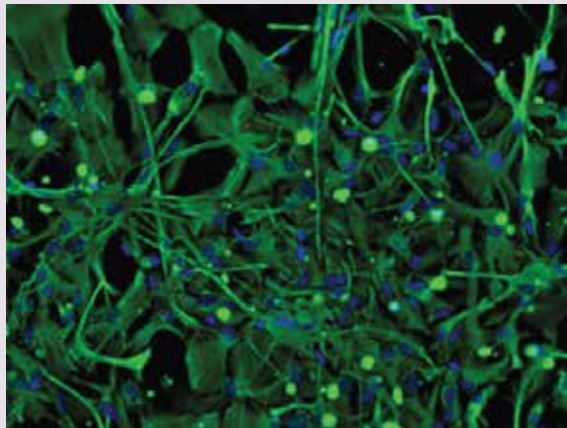
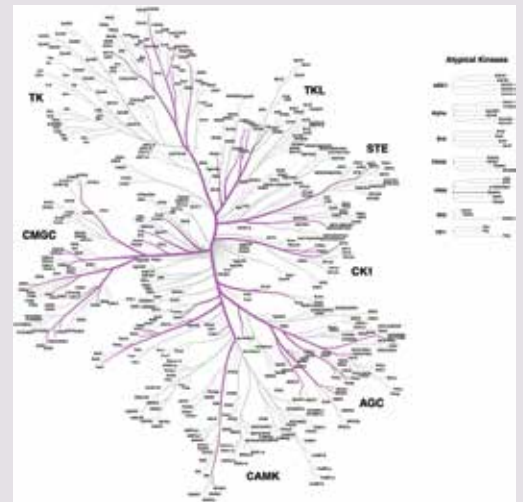
Featuring: Gilles Maussion and Cecilia Rocha

Trends in Molecular Medicine

Illumination of understudied ciliary kinases

Featuring: Cecilia Rocha and Thomas Durcan

Frontiers in Molecular Biosciences



The use of SOX10 Reporter towards ameliorating oligodendrocyte lineage differentiation from human induced pluripotent stem cells

Featuring: Valerio Piscopo, Alex Chapleau, Gabriela Blaszczyk, Julien Sirois, Zhipeng You, Vincent Soubannier, Carol Chen, Thomas Durcan

Glia

Homozygous ALS-linked mutations in TARDBP/TDP-43 lead to hypoactivity and synaptic abnormalities in human iPSC-derived motor neurons

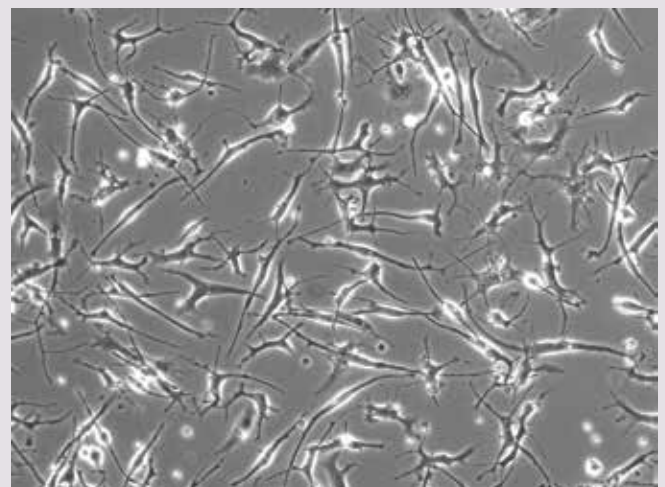
Featuring: Sarah Lépine, Carol Chen, Narges Abdian, Anna Franco, Ghazal Haghi, Maria Montiel, Gilles Maussion, Mathilde Chaineau, Thomas Durcan

iScience

An adapted protocol to derive microglia from stem cells and its application

Featuring: Marie-France Dorion, Irina Shlaifer, Carol X.-Q. Chen, Michael Nicouleau, Valerio E. C. Piscopo, Aeshah Alluli, Taylor M. Goldsmith, Alexandria Schneider, Nathalia Aprahamian, Rhalena A. Thomas, Thomas M. Durcan

Molecular Neurodegeneration



Upcoming Events

NEURO SERIES

iPSC Seminars: Early Drug Discovery Unit (EDDU)

Mercredi 19 juin, 11h00

Amphithéâtre Jeanne-Timmins, Le Neuro

Wednesday, June 19, 11 AM EDT

Jeanne-Timmins Amphitheatre, The Neuro



DEREGULATED AUTOPHAGY AS AN UNDERLYING MECHANISM OF NEURODEVELOPMENTAL DISORDERS

Professor Nael Nadif Kasri, PhD

Donders Institute for Brain, Cognition and Behaviour

Department of Human Genetics and Cognitive Neuroscience

Radboud University Medical Center, Nijmegen, Netherlands

Sign up using the links on our websites!

Check us out on social media!



[@neuro_eddu](#)



[The Neuro's EDDU
\(Early Drug Discovery Unit\)](#)



[The Neuro's EDDU
Community and Resource Hub](#)

Our next issue comes out in August!